

A FINE-TEXTURED FABRIC MADE FROM
100% RECYCLED POLYESTER

PLANET

Non Metallised



- Made from 100% recycled polyester
- Cradle to Cradle certified
- Recyclable
- Coordinated range with Planet Metallised

Suitable for internal installation using:



Roller Shades



Panel Glide Shades



Vertical Shades

Internal installation only.

Openness Factor:	5%
Fabric Width:	300 cm
Thickness:	0.38 mm
Weight:	170 g/m ²
Composition:	100% recycled polyester
Fire Retardancy:	Compliant to AS1530.2 and AS1530.3.

Certificates available on request.

Fenestration Properties:

	OF	Tuv	Tv	Rv	Ts	Rs	As	G Value: C Glaze	G Value: D Glaze
WHITE	5%	20%	49%	53%	48%	49%	4%	0.42	0.27
LINEN	5%	19%	43%	45%	45%	44%	11%	0.43	0.28
PEARL LINEN	5%	17%	35%	36%	42%	42%	16%	0.44	0.28
PEARL	5%	18%	32%	34%	40%	40%	19%	0.44	0.28
PEWTER	5%	12%	14%	11%	32%	29%	39%	0.47	0.28
BRONZE	5%	8%	10%	7%	29%	26%	46%	0.48	0.29
CHARCOAL	5%	6%	5%	8%	18%	25%	57%	0.49	0.29

Openness Factor / OF
Ultraviolet Transmittance / Tuv
Light Transmittance / Tv
Light Reflectance / Rv
Solar Transmittance / Ts
Solar Reflectance / Rs
Solar Absorption / As
G Value / G tot

G tot: Total solar factor, ratio of the energy transmitted through a window and solar protection device. Classification and reference glazing according to standard EN 14501
Data is current at time of printing. Please check website for most current information.

Certification:



Cradle to Cradle Certified™
Bronze Certified.

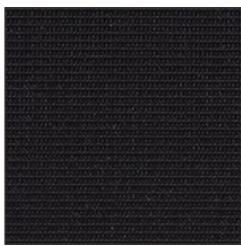
A globally recognized measure of safer, more sustainable products

Light-fastness:	6-7 (ISO 105 B02)
Care Instructions:	Handle fabric with care and wear clean gloves. Lightly dust regularly with clean feather duster. A hand-held vacuum with low suction may also be used. When vacuuming, avoid pulling or stretching the fabric. On metallised side, spot clean by gently blotting with a slightly damp cloth. Leave the blind down until completely dry.
Warranty:	5 year warranty as complete roller shade systems for internal use. For more information regarding warranties and extended warranties, please contact Climate Ready Fabrics.

Sustainability:

- 100% recycled polyester
- PVC-free
- 100% recyclable

Colour Range:



Charcoal 1887



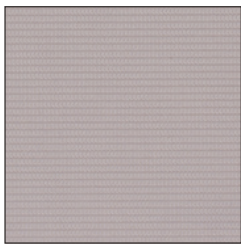
White 0204



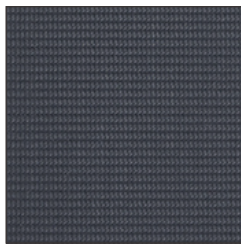
Linen 0750



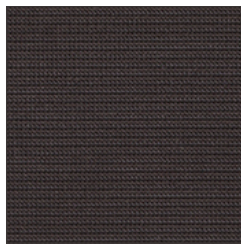
Pearl Linen 4748



Pearl 1500



Pewter 2780



Bronze 4999

Colours are to be used for reference purposes only. For an accurate colour sample, please contact Climate Ready Fabrics for a fabric swatch sample.

© Copyright January 2020 Climate Ready® Fabrics
 Specification information and other data are based on information available at the time of publication of this document and are subject to production tolerances and/or change without prior notice.